



*The Complete Solution Provider*



*The Complete Solution Provider*

**The Complete Solutions  
provider for your Commercial and  
Industrial Needs**

### Reach Us - Headquarter


-  [enquiry@cutechgroup.com](mailto:enquiry@cutechgroup.com)
-  +65 66650187
-  #03-18, Pioneer Junction,  
3, Soon Lee Street, Singapore - 627606
-  [cutechgroup](https://www.facebook.com/cutechgroup)
-  [cutech-group](https://www.linkedin.com/company/cutech-group)
-  [cutech\\_group](https://www.instagram.com/cutech_group)



## About Us

Cutech Group, an organization settled in Singapore with branches in Various parts of the globe, is ability in offering different types of assistance to Industrial, Commercial and Government Clients across Marine, Oil and Gas, Petrochemical, Power and Process Sectors. Since its beginning, Cutech has effectively developed to turn into a global organization with direct workplaces in UAE, Saudi Arabia, India, Malaysia, and Indonesia, Philippines, South Korea and partners around the world.

Cutech has its quality in the total life pattern of items in different areas going from Engineering, Procurement and Construction, Inspection, Testing, Fabrication, Installation, Commissioning, IT and Software Advancement, Maintenance and Monitoring, Construction, Solar Services, Manpower Outsourcing, Offshore and Marine, Training and Certification and soon..



Our complete scope of world-leading administrations assists you with diminishing risk, control quality and amount, and meets all important administrative prerequisites across various regions and markets.



## Our Endeavors

We are offering types of assistance and Solutions for client's basic practical regions with all around experienced and qualified personals. We generally make our Services are profoundly valued and durable relationship with the customers.

Our objective for accomplishing the client's day-today needs by making client situated projects.



## WHAT WE DO

Cutech has its presence in the complete life cycle of products in various sectors ranging from Inspection, NDT, Engineering, Procurement & Construction, and IT & Software development, Solar, Manpower Outsourcing, Training & Certification and Marine Services.



### Inspection

Inspections Services reduce risk and guarantee quality and exactness, just as meeting administrative necessities.



### NDT

We provide non-destructive testing (NDT), materials testing and welding services for an assorted scope of businesses.



### Construction

We offer a wide scope of Civil and Structural Engineering Design Services for changing over client thoughts and ideas into the real world.



### EPC

We Provides Engineering, Procurement and Construction (EPC) solutions in the field of power, metals and minerals, industrial solutions and several global markets.



### IT & Software Development

Our IT and Software development team that plans and builds scalable software solutions for endeavors and new businesses.



### Technical Manpower Outsourcing

We are the major provider of Technical Manpower for Marine, Oil & Gas, and Petrochemical Industries in and around Singapore since the induction of the company.



### Offshore & Marine Services

Marine Services is one of the world's leading providers of offshore manning; Anchorage & Voyage Repairs, installations and maintenance work, and undertakes all kind of repairs including Specialist services.



### Solar Energy Services

We are providing affordable solar power in an efficient, sustainable and socially responsible manner. We Design, Engineer, Procure, Construct, Operate & Maintain the Solar Photovoltaic (PV) System.



### Training & Certification

Our training courses ensure that individuals are exam-ready and have the skills to become competent and Experts.

# Inspection Services

Cutech is accredited Inspection Body Complying to ISO/IEC 17020 requirements and provides independent Inspection & Expediting Services globally delivered by highly qualified and trained engineers.

## "Quality Solutions for your Business Needs"

### Cutech Advantage

- Accredited Inspection Body
- Experienced & Certified Inspectors.
- One Stop Solution Provider
- On Call out, Short term and Long Term basis
- In house Procedures & Checklist
- Dedicated Coordination Team
- Project Monitoring through Web Portal



### In-Service Inspection

- API 570,510 & 653 Inspections
- Onstream Inspection
- Base Line Inspection, RBI and FFS
- Inspection during Shutdown
- Pressure Vessel /Boiler Inspection
- Structural Steel work Inspection (ITA)
- Asset Integrity Management
- Professional Engineer Services
- Failure Analysis & Recommendation
- Remaining Life Assessment
- Life Extension Survey
- Storage Tank Survey
- Remote Visual Inspection Crawler/Videoscope)

## "Total Quality Control, Quality Assurance & Inspection Solutions"

### Inspection & Expediting

- 2nd and 3rd Party Inspection
- Pressure Vessel & Lifting Equipment
- Well-head and Completion Equipment
- Piping & Structural Modules
- ITA Structural Inspection
- Plant Turnaround Inspection
- Rotating & Static Equipments
- QA/QC Project Management
- Electrical & Instrumentation
- Hazardous Area Inspection (Ex)
- RIG Inspection
- Steam Pipe Inspection (MOM Approved)
- Solar Panels Inspection
- Pre-shipment inspection

### Rig Inspection

- Rig Condition Survey
- Rig Reactivation
- Noise Survey
- Cable Management Solutions
- Electrical Equipment in Hazardous Area
- Asset Layup and Preservation Survey
- Warm and Cold Stacking inspection
- Infra Red Thermography (IRT) Surveys

## Inspection

### Quality Assurance & Quality Control

- Total Document Control
- Technical Procedure Preparation
- Project Quality Management

### Lifting Equipment & Lifting Gear Inspections

- Visual and Dimensional checks
- Load Test & MPI

### Welding Consultancy

- Welding Procedure Specification
- Welding\Welder Testing

### Civil & Structural Consultancy

- Structural & Geotechnical Analysis And Design
- Site supervision services
- Periodic Structural Inspection
- Condition Assessment of Existing Building
- ERSS Design and Supervision
- Design of Safety Professional services

### Cathodic Protection

- Site surveys
- Installation & Monitoring
- Design of CP systems
- Testing and Commissioning

## Non Destructive Testing

- Ultrasonic Testing - (UT – Weld, UTG)
- Magnetic Particle Testing - (MPI)
- Radiography Testing - (RT)
- Dye Penetrant Testing - (PT)
- Surface Eddy Current Testing - (Weld)
- Heat Treatment Services - (PWHT & Pre-Heating)
- Hardness Testing - (Rebound & UCI)
- PMI Testing
- Ferrite Measurement
- Surface Roughness Test
- In-situ Metallography Testing
- Rope Access Services
- NDT Consultancy & Level III services
- Holiday Testing
- Hatch Leak Testing
- Alternating Current Field Measurement
- Drone survey



## Advanced Non Destructive Testing

- Time of Flight Diffraction Testing - (ToFD)
- Scorpion Ultrasonic Thickness Gauging
- High Temperature Ultrasonic Weld Testing
- Phased Array Ultrasonic Testing - (PAUT)
  - Weld Inspection, Corrosion Mapping, Flange Face
- Corrosion Detection & other customized application
- Tube Inspections
  - Eddy Current Tube Testing - (ECT)
  - Remote Field Eddy Current Tube Testing - (RFT)
  - Magnetic Flux Leakage Tube Testing - (MFL)
  - Near Field Tube Testing - (NFT)
- Underwater Eddy Current Testing
- Magnetic Flux Leakage Tank Floor Mapping - (MFL)
- Tank Bottom Survey & Pipe Inspection
- Infrared Thermography
- Remote Control Visual / Video Camera Inspection
  - Coverage range of 5 meters to 80 meters
- Short- & Long-Range Ultrasonic Testing
  - (SRUT & LRUT)
- High Temperature Hydrogen Attack Inspection - (HTHA)
- Pulsed Eddy Current Testing - (PEC)
- Automated Ultrasonic Testing - (AUT)
- High Temperature Phased Array Ultrasonic Corrosion
- Automatic/RMS Corrosion Mapping
- NDT Consultancy & Level III Services
- Custom Specialized NDT Solution



NDT

## Specialized in Skids, Modules, Piping, Pressure Vessel Design & Fabrication

Cutech is well established in Module & Skid Packages Supply from initial design through Factory Acceptance Testing (FAT), we have the internal capabilities to provide a turn key package complete with 3D modeling, fabrication, controls and instrumentation, electrical wiring, pressure testing, performance, testing and installation.

### Water Treatment Plant / Skid

- Chemical Injection Skids
- Hypochlorite generators
- UF membrane package
- Water treatment systems
- Produced Water Treatment Package

### Process Skid / Modules

- Gas Compressor Packages
- Fuel Gas Skids
- U-stamped pressure vessels & Heat Exchangers
- Odorant Injection Skids
- Fuel Gas & Fuel Oil Metering Skids

### Pump Skid

- Reciprocating compressors
- Engine driven Other specialty compressors
- Air and gas compressor packages
- Instrumentation and control panels
- Air Compression, Filtration & Receiver Package

### Deluge System / Skid

- Anti-foam systems
- Fire extinguishing systems
- Outdoor portable integrated power & control systems



### Fabrication of Piping & Equipment

- Fabrication of Pressure Vessels
- Structural Fabrication & Erection
- Fabrication and Erection of Column Internals
- Refurbishment of Pressure Vessel & Heat Exchangers
- Hydro/Pneumatic Testing of Pressure containing equipment's
- Mechanical Works on Alignment of Pumps

### Design & Engineering

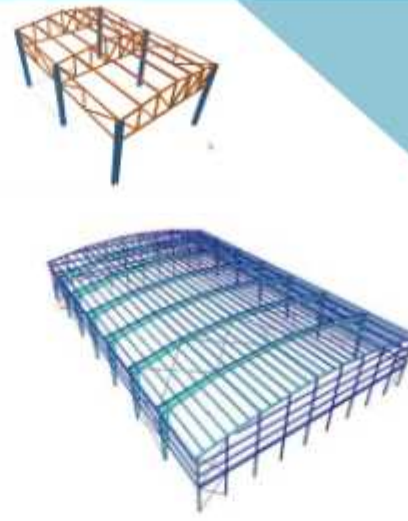
- Process calculations
- PFDs, P&IDs, Process data sheets
- Piping & Structural analysis
- Plot plan & Conceptual layout
- Instrumentation hook up drawing
- Pressure vessel & Heat exchangers design
- Isometric & MTO
- 2D & 3D Conversion
- Equipment & Piping layout
- Specification & Data sheets
- Electrical single line diagrams
- Cable tray routing



Registered with Professional Engineering Board (PEB) Singapore, Cotech Civil & Structural consultant department is led by experienced team of Professional Engineers, Design Engineers, Resident Engineers, Resident Technical Officers & Inspectors.

## Our Services

- Infrastructure Systems Design
- Structural Analysis and Design
- Geotechnical Design Works
- Temporary Works Design
- Design for Safety Professional
- Authorities Submission (URA, BCA, LTA, FSSD ,etc)
- Periodic Structural Inspection
- Independent Testing Agency (ITA) Services
- Site Supervision (QPs, REs & RTOs)
- Solar Panel Roof Conditional Assessment



# Construction

## Specialized in Skids & Modules

Cutech is a diversified and rapidly expanding Engineering Company. We offer wide range of Services & Products to Industrial, Commercial & Government Clients across Petrochemical, Process, Oil & Gas, Marine, Cement and Power Sectors. Cutech is well established in Module & Skid Packages Supply from initial design through Factory Acceptance Testing (FAT), we have the internal capabilities to provide a turnkey package complete with 3D modeling, fabrication, controls and instrumentation, electrical wiring, pressure testing, performance testing and installation.

### Water Treatment Plant / Skid

- Chemical Injection Skids
- Hypochlorite generators
- UF membrane package
- Water treatment systems
- Produced Water Treatment Package

### Pump Skid

- Reciprocating compressors
- Engine driven Other specialty compressors
- Air and gas compressor packages
- Instrumentation and control panels
- Air Compression, Filtration & Receiver Package



### Deluge System / Skid

- Anti-foam systems
- Fire extinguishing systems
- Outdoor portable integrated power and control systems

### Process Skid / Modules

- Gas Compressor Packages
- Fuel Gas Skids
- Odorant Injection Skids
- Fuel Gas & Fuel Oil Metering Skids

### Design & Engineering for Module / Skid / System Package

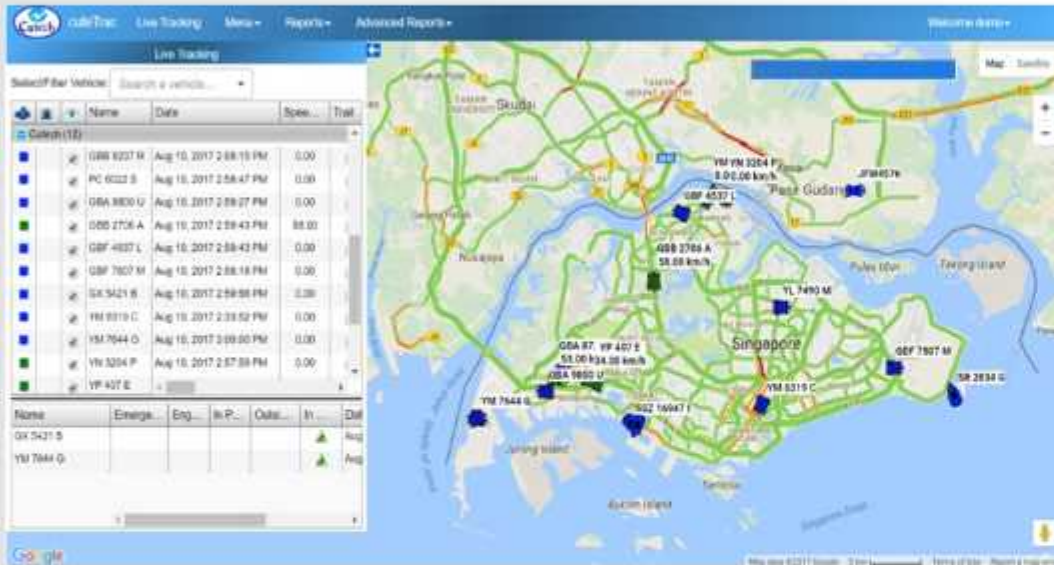
- Process calculations
- PFDs, P&IDs, Process data sheets
- Piping & Structural analysis
- Plot plan & Conceptual layout
- Equipment & Piping layout
- Isometric & MTO
- Pressure vessel & Heat exchangers design
- 2D & 3D Conversion
- Instrumentation hook up drawing
- Specification & Data sheets
- Electrical single line diagrams
- Cable tray routing
- Skid GA



EPC



- Software Products
- Customized Software Projects
- E-Commerce Solutions
- Mobile Apps Development
- Automation



We have domain specific modules such as Logistics / Servicing Industry / NDT / Marine / Construction, Engineering, Retail, Oil & Gas, Wholesale, food & Beverages, Landscaping etc.

## UFMS

Unified Facilities Management System

- Report Faults
- Submit Service Requests
- Monitor the Progress



### 01. cuteTrac

Fleet Management, GPS, Temperature and Fuel Sensors

### 02. cuteOffice ERP

Office Automation with HRM, Attendance Procurement, Sales, Accounting

### 03. cuteQM

Streamline QA/QC operations of Fabricators

### 04. cuteWMS

Warehouse Management

### 05. cuteTrans

Transport Management

### 06. cuteFWM

Facilities and defect

**IT & Software Development**

## Corporate Profile

We are headquartered in Singapore offering a wide range of Services & Products to Industrial, Commercial & Government Clients across Petrochemical, Process, Oil & Gas, Marine and IT Sectors. We were incorporated in 2005 and have grown to a staff strength of almost 600. We have subsidiaries and branches in Saudi Arabia, India, U.A.E., Indonesia, Malaysia, South Korea and Philippines.

**"We believe that an Innovative, Experienced and Competent Workforce is the Key to Success"**

## Why choose Cutech?

Our specialized Technical candidates are handpicked to cater to the niche requirements of our clients and fulfill their immediate placement needs.

Our dedicated team of placement officers provide staffing solutions to clients in various industries. Using our vast database of experienced candidates, we carefully screen, interview and evaluate before submission to the client.

Upon selection by the client we further negotiate with both parties and provide a workable solution that is satisfactory to the client and the candidate. We also take care of all payroll, contract completion and employee engagement services for our outsourced staff.



## Our Clients



# Manpower Outsourcing

## Our Placements

### TECHNICAL

- Structural Engineer
- E & I Engineer
- Mechanical Engineer
- Piping Designer
- Mechanical / Piping Supervisor
- QAQC Inspector
- Process Engineer
- Project Manager
- HSE/ Safety Coordinator
- Painting / Coating Inspector
- Structural Designer / Drafter
- Electrical Designer / Drafter

### COMMERCIAL

- Accounts Executive
- Admin Assitant / Executive
- Operations Executive
- Drafter HR Executive
- Software Engineers
- Software Designers
- Marketing Executives
- Data Entry Staff
- SAP Consultant
- Warehouse Assistant
- Cashier
- Receptionist

We can also provide staffing solutions for any other technical or commercial position that may not be listed above.

## Our Branches

### SINGAPORE

- Cutech Solutions & Services Pte Ltd
- Cutech Marine Services Pte Ltd
- Cutech Process Services Pte Ltd
- Cutech Quality Solutions Pte Ltd
- Cutech Green Ventures Pte Ltd
- Cutech Infocomm Solutions Pte Ltd
- Gam-X Marine Services Pte Ltd
- Waangoo Trading Pte Ltd

### OVERSEAS

- Cutech Arabia LLC
- Cutech Solutions India Pvt Ltd
- Cutech Energy Project Construction & Contracting LLC
- Cutech Contracting LLC
- Cutech Solution Malaysia SDN BHD
- Cutech Green Ventures India Pte Ltd
- Cutech Process Services Philippines Inc
- PT Cutech Indonesia

## Our Profile

Cutech is a rapidly growing global engineering group providing diversified services to the Marine, Oil & Gas. It started with its headquarters in Singapore and now has its global footprint established in the Middle East, India, Malaysia and Indonesia with associate partners worldwide.

- Your preferred Solution Provider for Electrical Telecom & Instrumentation Engineering, Construction and Maintenance Services
- High Voltage Switchgear & Distribution Transformer
- Low Voltage Switchgear & Distribution Transformer
- F & G Safety System Installation
- CCTV, Telecommunication System Installation
- Underground Electrical and Telephone Duct Banks Construction
- HT, LT, Instrument & Telecommunication Cabling, Splicing including Raceway
- Explosion Proof Installation
- Lighting and small power Installation
- Earthing & Lightning Protection
- Commissioning and testing of HT, LT Switchgear
- Fabrication & Installation of Control Panel



## Offshore & Marine



Cutech is a rapidly growing renewable energy installer established in Singapore. We design, engineering, procure and construct solar photovoltaic (PV) systems in Singapore, Malaysia and India. We create attractive, clean energy solutions that ensure a high return on investment and reliable, long lasting System for our Clients. With a strong track record across the solar energy industry, we work with investors, project developers, building owners who want to ensure their solar PV power plants are reliable and profitable throughout their useful life.

## Our Services

- Turnkey Roof Top Solar PV projects
- Residential Solar PV System
- Operational and Maintenance of Solar Assets
- EV Charging Station
- Off grid systems



# Solar Energy

## Technical Training, Examination & Certification

Cutech is an Accredited Training Centre that supports the growth of skilled personnel in technical fields. Eligible technical personnel are provided with a platform to earn internationally recognized professional certifications when they complete our programmes.

Our training programmes are structured to meet job-specific industry requirements & are conducted by our expert pool of trainers. The programs cover theory education & hands-on practical sessions with quality delivery of syllabus to meet stringent criteria of Local & International Accreditation Bodies. Our carefully crafted programmes prepare technical personnel, not only for examinations but also for post-training site-jobs, where the trainees assume new independent lead roles.

Classes are scheduled all year round through both online & classroom modes. Supplemented with funding support, regardless of individual or corporate sponsorships, one can easily pursue their career progress with Cutech Training.



## Our Credentials

SKILLSfuture SG



TWI  
Training  
Representative

UTAP  
Urban Training Assistance Programme



ASNT | PARTNER.

## Welding Inspection

- **Certified Welding Inspector**  
AWS-CWI | CSWIP 3.1
- **Certified Senior Welding Inspector**  
AWS-SCWI | CSWIP 3.2
- **Welder Certification Services**  
AWS-ATF

## API Inspector Preparatory

- In-Service Inspection for Plant Shutdowns**
- API 510 Pressure Vessel Inspector
- API 570 Piping Inspector
- API 580 Risk-Based Inspection
- API 653 Above Ground Storage Tank Inspector
- API 936 Refinery Personnel

## Training & Certification

## Customized

- NDT Fundamentals
- UT Fundamentals
- Corrosion Awareness
- Targeted API
- Welding/QC

## NDT Level-1|2|3

- SNT-TC-1A
- ISO 9712 CSWIP
- Liquid Penetrant Dye Test (PT)
- Magnetic Particle Testing (MT)
- Radiographic Film Interpretation (RTFI)
- Ultrasonic Testing (UT)
- Eddy Current Testing (ET)
- Advanced NDT (TOFD/PAUT)

## RE/RTO Renewal IES Approved Courses with STU points

- Safety**
- Basic Construction Safety
- Safety in Confined Space
- Structural**
- Supervision of PPVC
- Supervision of Critical Connections

Training Locations: Singapore (HQ) | India | Indonesia | Malaysia | Philippines | Saudi Arabia | UAE  
For more details on course schedules, fees or funding related queries: <http://training.cutechgroup.com>



## Our Credentials





## Contact Us

### Our Offices

#### Corporate Address

#03-18, Pioneer Junction,  
3, Soon Lee Street, Singapore 627606.

Tel: +65 66650187

Fax: +65 65605892

Email: [enquiry@cutechgroup.com](mailto:enquiry@cutechgroup.com)

#### Malaysia

##### Cutech Solutions Malaysia SDN BHD

D-9-1, City Park @ i-City,  
Selangor Golden Triangle,  
40000 Shah Alam, Selangor.

Tel: +6072546560

Fax: +60 7254 6561

Contact: Mr. Farid Abu Bakar (Director)

Email: [enquirymy@cutechgroup.com](mailto:enquirymy@cutechgroup.com)

#### Tuas Factory

65, Tuas View Walk 2,  
Singapore 637633,

Tel: +65 66650187

#### Philippines

##### Cutech Process Services Philippines Inc.

Unit No. 4C Maptan Building, Pallocan West,  
Batangas City, Philippines - 4200.

Tel No: +63 (43) 7409017

Email: [enquiryph@cutechgroup.com](mailto:enquiryph@cutechgroup.com)

Contact: S. MOHANRAJ (General Manager)

Email: [ksmohan@cutechgroup.com](mailto:ksmohan@cutechgroup.com)

Mobile No: +639175165525

#### Saudi Arabia

##### Cutech Arabia LLC

#02-45 AL Waha Downtown,  
Prince Mohammad Bin Fahad Road,  
Post Box No - 4171 Dammam-31442,  
Kingdom of Saudi Arabia.

Tel: +96 6502551980

Contact: Mr. Senthamilan (General Manager)

Email: [senthamilan@cutechgroup.com](mailto:senthamilan@cutechgroup.com)

#### India

##### Cutech Solutions India Pvt Ltd

No 152 (SP), Tap Turbo Park,  
4th Lane, First Main Road,  
Ambattur Industrial Estate, 21st Phase,  
Chennai - 58.

Tel: +91 4443023170

Contact: Mr. Mayuran (Manager)

Email: [enquiryind@cutechgroup.com](mailto:enquiryind@cutechgroup.com)

#### Indonesia

##### PT Cutech Indonesia

Tarumanegara Ruko Bizpark Blok C No. 3,  
Purwadana Telukjambe Timur,  
Kab. Karawang - Jawa Barat.

Tel: +62778452924

Contact: Mr. Kumar (General Manager)

Email: [enquiryindo@cutechgroup.com](mailto:enquiryindo@cutechgroup.com)

#### South Korea

##### Cutech Solutions Korea Co. Ltd

Level 3. Okpo-Ro. 170-4.  
Geoje-Si. Gyeongsangnam Do.  
South Korea. Postal code: 53229

Tel: +82 1088125023

Fax: +82-55-285-0655

Contact: Mr. Sivanandham (Manager - Inspection)

Email: [enquirykr@cutechgroup.com](mailto:enquirykr@cutechgroup.com)